

# LIGHTPATH®

## SLS2000

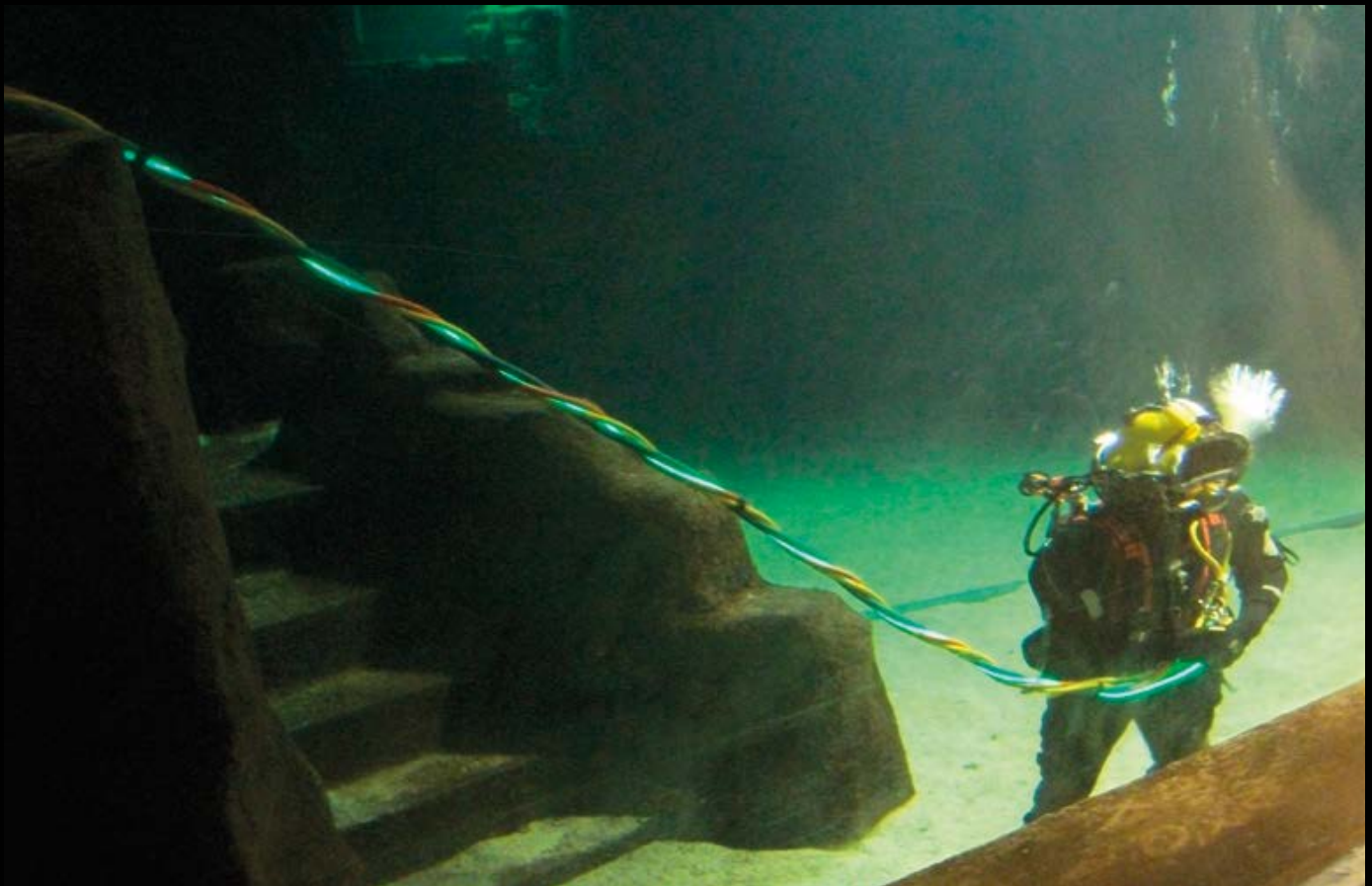
### Subsea Lighting System



- The **LIGHTPATH®** SLS2000 is PhotoSynergy Ltd's (PSL) most recent product, developed following feedback from divers and their teams, providing the option to illuminate the dive umbilical from the diver end
- This could be as a stand-alone unit, but more commonly will be in addition to illumination of the umbilical from the diving bell
- Small and compact, it can be attached directly to the umbilical thereby not encumbering the diver with additional equipment
- The SLS2000 can be used in saturation diving and surface air diving applications



- It requires just 3W of power from 12v or 24v, which can be supplied by a custom splice developed in collaboration with Greco Developments Ltd, either directly into the umbilical video/comms cable or at the diver camera/lights connector

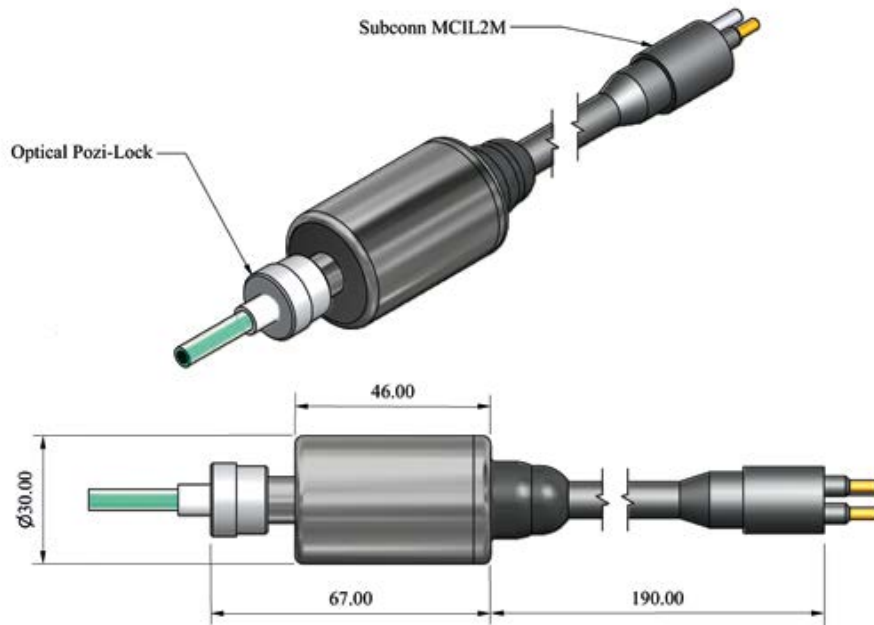


[www.photosynergy.co.uk](http://www.photosynergy.co.uk)

# LIGHTPATH®

## SLS2000

### Subsea Lighting System



Technical Specification	Type SLS2000
Mechanical construction	316 Stainless steel
Canister dimensions	46x30mm dia. (excluding cables & connectors)
Weight in air	200g
Weight in water	150g
Electrical connection	MCIL2M on 19cm cable
Mating connector	MCIL2F
Power requirement	24V dc @ 0.15A (12V dc @ 0.3A)
Power consumption	4W max
Colour options	Green, Blue, White
Optical coupling	Optical Pozi Lock (fibre quick connect)
Operating modes	Continuous
Optical window	Sapphire
Depth rating	500m (50 bar)
Operating temperature	0°C to 40°C

PhotoSynergy Ltd reserves the right to change the above specification without notice.

Updated 25/01/22

#### Pin out on the MCIL2M connector

Pin 1      0 Volt  
Pin 2      24 Volts

